

SUBMITTAL TO THE BOARD OF SUPERVISORS  
COUNTY OF RIVERSIDE, STATE OF CALIFORNIA

202 B



FROM: TLMA - Transportation Dept.

SUBMITTAL DATE: June 2, 2003

SUBJECT Resolution 413-531 to Establish No-Stopping Zones on Wineville Avenue,  
Mira Loma area

RECOMMENDED MOTION:

That the Board adopt Resolution 413-531 to establish No-Stopping Zones on Wineville Avenue in the Mira Loma area, as described in attached Resolution 413-531.

BACKGROUND:

The Transportation Department was contacted by Supervisor Tavaglione's office, which has been receiving complaints from citizens who are concerned about trash being discarded and the roadway being used as an overnight parking area for trucks.

Transportation Department staff conducted a field review of the site and determined that the proposed no-stopping zones would prevent trucks from parking on either side of Wineville Avenue.

Based on this review, the Transportation Department recommends approval of these No-Stopping Zones.

The Transportation Department staff has contacted the Riverside Area office of the California Highway Patrol regarding the proposed zones.

County Counsel has approved this resolution.

REVIEWED BY EXECUTIVE OFFICE  
*Shirley S. Stewart*  
DATE 6/4/03

*George A. Johnson*  
George A. Johnson  
Director of Transportation

LTT:bjl  
attachments  
cc: County Counsel  
Lawrence Tai

Department Recommendation:  Consent  Policy  
Per Executive Office:  Consent  Policy

Prev. Agn. Ref.

Dist. 2

AGENDA NO.

2.6

2 RESOLUTION NO. 413-531  
3 ESTABLISHING NO-STOPPING ZONES  
4 IN THE MIRA LOMA AREA

5 BE IT RESOLVED, DETERMINED AND ORDERED by the Board of Supervisors,  
6 County of Riverside, State of California, in regular session on June 10, 2003

7 that pursuant to Ordinance No. 413, the following No-Stopping Zones are hereby established in  
8 the Mira Loma area:

9 On the east side of Wineville Avenue starting at a point 80 feet north of the  
10 centerline of Limonite Avenue to a point 6,887 feet north of said centerline, a tot:  
11 distance of approximately 6,807 feet.

12  
13 On the west side of Wineville starting at a point 50 feet south of the centerline of  
14 Bellegrave Avenue to a point 6,835 feet south of said centerline, a total distance  
15 of approximately 6,785 feet.

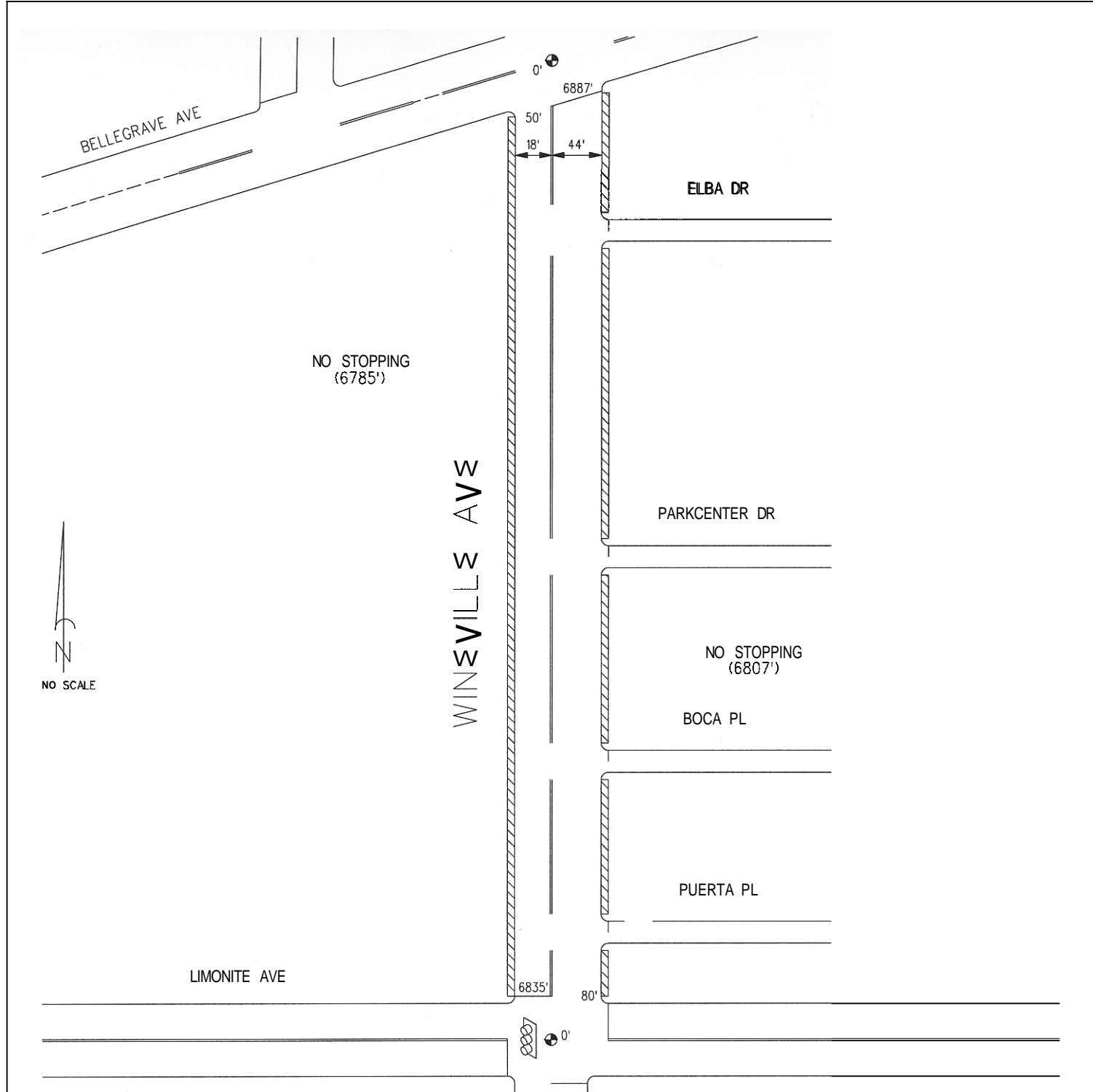
16  
17 AH:jab  
18 April 7, 2003

19 F:\Traffic\RESO\Resolutions\413-531.doc

FORM APPROVED  
COUNTY COUNSEL

APR 18 2003

BY Jordan V. Woo



NO STOPPING  
(6785')

WINEVILLE AVE

ELBA DR

PARKCENTER DR

NO STOPPING  
(6807')



BOCA PL

PUERTA PL

LIMONITE AVE



**LEGEND:**

-  PROPOSED NO STOPPING ZONE
-  POINT OF INTERSECTION

COUNTY OF RIVERSIDE  
TRANSPORTATION DEPARTMENT  
TRAFFIC ENGINEERING SECTION

RESTRICTED PARKING ZONE  
ON  
WINEVILLE AVENUE  
IN THE  
MIRA LOMA AREA

FILE REFERENCE	
SRF NO.	03-02-011
CAD FILE:	NOPARK321
MAP PAGE:	7, 14A



DATE	DRAWN BY	PAGE
1/31/2003	A. HIGGS	1 OF 1